

GIVE A LITTLE SOMETHING

Donate a gift to a child this Christmas for local children's charity *Derian House*

The Christmas season is almost upon us once again.

This year when you are buying your Christmas presents, why not do a little something different and donate a new toy or book for a child who is a little less fortunate.

Residential Management Group are collecting gifts for local Children's charity and hospice **Derian House** and are asking residents to donate gifts for children with life shortening conditions.

Situated in the heart of Lancashire close to Buckshaw Village on Chancery Road, Derian House is renowned throughout the region as being at the forefront of children's palliative and respite care.

The hospice currently supports over 300 families with children who have life shortening illnesses and they can choose from a range of care and support services to meet their individual needs which include; short planned breaks in Derian House, Hospice at Home, sibling support group, end of life care and support at



home, or in Derian House, and bereavement support after the death of a child.

Derian have flats that enable parents, carers, and siblings to stay so you do not have to leave your child. They also welcome children and young people on their own to allow families to catch up on things back home.

DERIAN HOUSE HISTORY

Derian feel privileged to be counted as the 'friends' of the many families they have cared for and supported since the

hospice opened in 1991 as well as those to whom we continue to offer ongoing support.

They know there will be countless others in the future who will need someone to be there for them, to provide not only a high standard of specialist care for their child, but a reassuring framework of emotional support for them as a family.

Residents of Buckshaw can donate gifts for these children. Suggested value of the gift is £10. No high value items please and do remember older children as well.

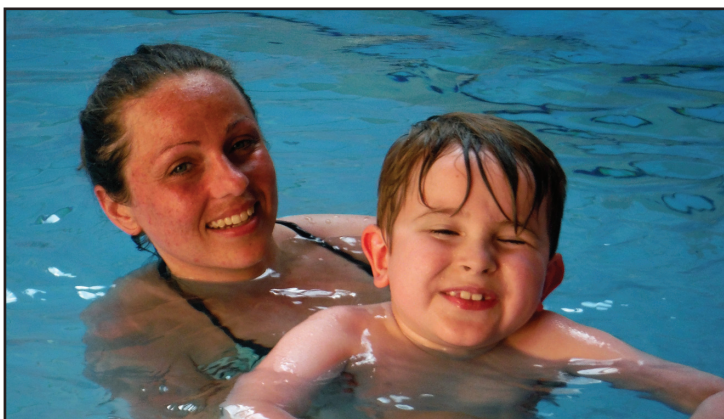
You can drop your gift off at the community centre, Buckshaw Village on the following dates:



Tuesday 15th, Wednesday 16th, Thursday 17th or Friday 18th December between 8.30am-4pm.

If you are unable to attend at these times, get in touch with us on twitter, search '**RMGBuckshaw**' and alternative arrangements can be made. You can also get in touch with our contact centre on **0345 002 4444** to arrange collection.

For more details on Derian House or to find how to get involved with the charity, visit their website, derianhouse.co.uk



THE FACILITIES: Latest News

BUCKSHAW TAEKWONDO has been running since January this year, offering two classes at The Community Centre.

self-defence and sparring. Family discounts are available. We also offer classes in Bamber Bridge on other days.

The first, on Wednesday's at 4pm is aimed at the little ones, The Buckshaw Dragons class is suitable for kids aged 3-5 years and runs from 4pm-4.30pm and is designed to help younger children develop co-ordination, fitness, confidence and most importantly having fun!

From 11th January we are offering an after school class for students of the Trinity Primary School. This class culminates with the students being given the opportunity to take their first grade.

Our family class is suitable for kids aged 5 upwards, runs on Wednesday's from 4.30-5.30pm and covers fitness, flexibility,

After the Christmas break the club are offering four weeks free training or one free session and a free suit offer. Please visit buckshaw-martialarts.co.uk or call **07956 000 173.**



BUCKSHAW CREATIONS

Earlier this month marked the return of Buckshaw Creates Christmas Craft Fair and this fabulous event was full of festive cheer and wonderful stalls including Scrumpy Pig, The Laser Cottage and Livvy Loves.

Buckshaw's musical theatre group, VAMP gave wonderful performances. The raffle held in aid of LW Storehouse, Chorley Foodbank raised a fantastic £129.

Warming mulled wine and delightful cakes were served by The Little Teacup Tearoom.

Organisers, Claire Butler and Julia King, confirmed it was their best yet, we are thrilled to have such an amazing turnout. We've had wonderful feedback from visitors and stallholders'.

The song rooms choir and



Christmas Events Calendar at Buckshaw Village Church



Christmas is just around the corner and Buckshaw Village Church have a host of events at The Community Centre.

Sunday 13th Dec: 10.30am
Christmas Jumper Sunday

Sunday 20th Dec: 10.30am
When a Child is Born
Christmas Tree decorating competition

Thursday 24th Dec: 4pm
Do you hear what I hear?
Buckshaw Xmas Big sing

Friday 25th Dec: 10.30am
I wish it could be Christmas
Everyday

Find out more about Buckshaw Village Church via their website: buckshawvillagechurch.org.uk or follow them on twitter at 'buckshawchurch'.

ZOYA TEPATHLON!

The fabulous Zoya Dance group recently took part in the children in need tapathon which involved a tap dance in tesco's as part of a world record attempt with other dancers around the UK. Check out the group at www.zoyadance.net

BVCA EASTER EVENT IN 2016

Already confirmed in 2016 at the community centre is Buckshaw Village's Community Association's annual 'Easter event'. You find more details about the BVCA via their website buckshaw.org and also search for the group via facebook under 'The BVCA.'

ROF CHORLEY GALA DAY

Local historian *Stuart Clewlow* with his regular History of Buckshaw feature..

While the ordnance factory, which became known as ROF Chorley was still being built, a large Sports & Gala Day was hosted on the grounds of Lisieux Hall off Dawson Lane, Whittle le Woods.

It was intended to be a celebration of the large scale construction project and a mass day of entertainment for invited guests, locals and the construction workers of Sir Lindsay Parkinson & Co Ltd.

On Saturday 20th August 1938, one of the VIP's was the famous Gracie Fields. There was also



Gracie Fields at the Gala



Ticket & Stewards Ribbon

Walford Hyden and his Café Colette Orchestra, Silcock's World Fair, a playground and sports competition.

The sports competition consisted of 100 yards sprint, 400 yards, sack race, wheel barrow race, high jump, long jump, tug of war, and even a marathon race which started at Chorley Town Hall.

The whole event proved to be very popular and was a great success. Such was the interest in the occasion that highlights of the day, especially the performance by Gracie Fields was recorded by Pathe News and now resides in the film archives.



Ticket for the day

The gala day was enjoyed by the local community and was a boost to morale in the construction workers and within 12 months the overall ordnance factory site would be complete and ready to host a very official and very royal opening by King George VI.

If you would like to know more information relating to Buckshaw Village's history, get in touch with stuart via saclewlow@yahoo.com

You can also find more information about ROF on Facebook: 'ROF Chorley'.

CONSIDER PEDESTRIANS AND FELLOW MOTORISTS

At RMG, we have had several residents contact us regarding parking and drivers within the Buckshaw area.

There have been reports of cars driving over peoples gardens or grassed/deeded areas, blocking access to other cars as well as driving too fast on unadopted roads.

We would also like to remind residents that visitors bays are not meant for cars, trailers or other vehicles to be left in these bays for long periods of time.

Residents who do this are effectively in breach of their leases and in turn could well end up costing that block or development additional administration charges whilst the problem is investigated.

Please consider your neighbours and park in your own bay.

You can of course get in touch with our customer contact centre by telephone on **0345 002 4444**, by emailing us at: customerservice@rmg.gb.com or chat online with us at rmgliving.co.uk However, please always refer to the terms and conditions of your lease for your property in relation to parking space(s).

Any visitors bays may well be for a specific development and are not 'permanent parking spaces' for everyone and anyone to use. It is also worth noting that RMG as the managing agents on Buckshaw and Chorley G1 do not manage or maintain the highways and this includes unadopted roads.

A DOG IS FOR LIFE NOT JUST FOR CHRISTMAS..

A dog for Christmas? If you are planning a new canine addition to the family this Christmas, or you already have a four legged companion then this is for you! Jo Beaman from South Ribble Council explains more:



From April 2016 the law changes and it becomes an offence for your dog not to be microchipped, or for the details on the chip to be wrong.

Save yourself the cost of a court fine and invest in a chip. It also means that if your pooch takes itself off exploring it can be easily returned to you by South Ribble or Chorley Councils.

The darker nights also sees increase in the number of people choosing to walk their dogs more locally around the streets rather than further afield.

Please remember that dog fouling rules still apply after dark and Chorley and South Ribble Councils will issue Fixed Penalty Notices.



Please pick up after your dog and allow other residents and children to walk and play on the estate without fear of standing in something foul.

Wishing you a happy and healthy festive season with some crisp clear dog walking weather for us all to enjoy.

VETS AT BUCKSHAW

Don't forget Hillcrest Animal Hospital has a satellite clinic on Buckshaw at The Community Centre. The clinic is open 2pm-5.30pm on Monday to Wednesday, Thursday's opening times are 2pm-8pm and on Friday's from 2pm-6pm. Telephone: **01257 262448** or visit hillcrestanimalhospital.co.uk/buckshaw for more details.



IMPORTANT INFORMATION - Works on Ambrose Avenue - Nov/Dec 2015

All residents should be aware that there will be some disruption to traffic during the next two months heading up to Christmas 2015* on Ambrose Avenue, Buckshaw.

There are due to be amendment works to this road as follows:

- Removal of the current 'Build-out' island (see below).
- Once removed the road will be re-designed to be a straight road.
- There will be then the provision of 2 parking spaces on Ambrose Avenue. These works are planned to be completed before Christmas 2015 and



Build-out island on Ambrose Avenue



Ambrose Avenue

Information kindly supplied by Redrow

there should be minimal traffic disruption during this period.

However, the road maybe reduced to one working lane under Health and Safety requirements whilst some works are completed, this will ensure

the road will remain open at all times.

We apologise in advance for any inconvenience this may cause and thank you for your co-operation in advance.

*Subject to change.

HAVE YOU GOT IT SORTED?

Chorley Council with key information on correct recycling of rubbish

Buckshaw Village residents are being urged to double check the items they put out for recycling as part of a drive by Chorley Council to ensure the 'right stuff' goes in the 'right bin'.

This is because bins which have been 'contaminated' by non recyclable household waste being placed in blue bins, or recyclable items that are not sorted correctly, could now be rejected at the recycling plant since regulations have tightened recently. On average the majority of items are

correctly sorted and recycled, however recent bin checks by the council have revealed a number of items are wrongly put in the blue recycling bin. These include wood, textiles, black bags, food waste, toys, CDs and DVDs, batteries, nappies and furniture/ceramics.

Councillor Adrian Lowe, who oversees waste management for Chorley Council, said: "Over the last few weeks the council has taken a number of actions to try and reduce the volume of contaminated recycling".

Blue bin: Glass bottles & jars



- Glass bottles and jars including - wine/beer bottles, jam jars, sauce bottles
- Food and drink cans**
- Food & drink cans inc. - drink cans clean food cans
- Clean foil food trays, clean aluminium foil, empty aerosol cans
- Plastic bottles**
- Plastic bottles including - plastic milk bottles, pop and water bottles, shampoo bottles, cleaning product bottles
- No other plastics please!

"It is great to see that our messages are getting through but we still need to make further improvements and we will continue to strive to make people aware of what they can and can't recycle".

Residents are reminded that if they are in any doubt as to whether an item can be recycled, they should put it in the green refuse bin which is for all other rubbish including black bags, food waste, nappies and general household rubbish.

Black Pod or green box: Paper & Cardboard



- Newspapers and magazines
- Letters and envelopes
- Brochures, leaflets, flyers
- Yellow Pages and other directories
- Junk mail
- All types of card including:
- Ready meal sleeves, clean pizza boxes, cereal boxes, toilet and kitchen roll tubes, juice cartons
- Boxes from large items, please remove any polystyrene and flatten boxes.

"We already have an excellent recycling record, thanks to everyone's efforts, however it is absolutely vital that we all now ensure the right stuff goes in the right bin as the recycling which is rejected costs the council money and ultimately would have an impact on our residents as council taxpayers".

A list of items that can be recycled, and details of which containers to use can be found at chorley.gov.uk, or you can call **01257 515355** for advice on waste and recycling.